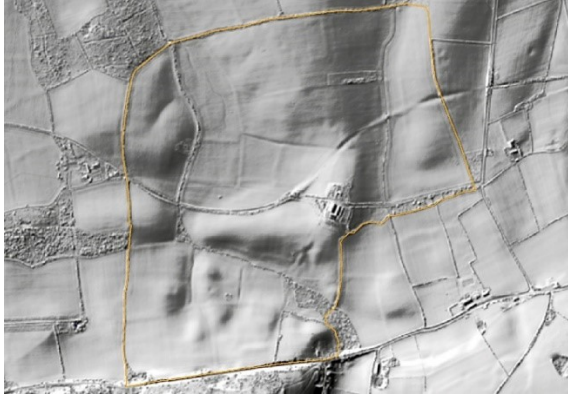


Great Park Lidar Imagery showing outline of park
LIDAR map rendering provided by houseprices.io.
Creative Commons Attribution Licence CC BY 4.0



Detail from John Speed Map of Wight Island 1611
showing 'Waching park' and 'Woottone Park'

Digital image reproduced by permission of the Isle of Wight Council



View from inside park looking ENE and showing north boundary

Photograph reproduced with permission from Mrs J Moon



View from inside park near south boundary looking NW to Solent

Photograph reproduced with permission from Mrs J Moon

